

KNOLL TEXTILES BLOOM LED

Design by Brent Markee, 2002–2010



ALLURE TIKI

MODEL NUMBER: 5201-800

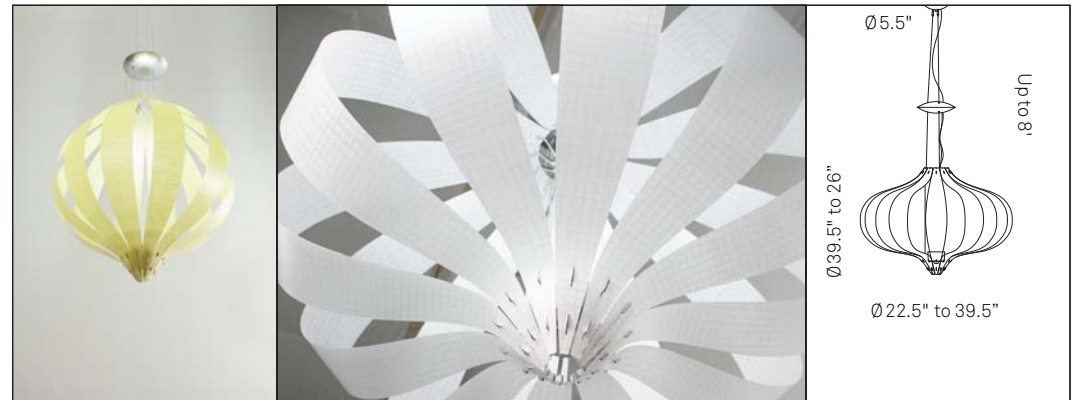
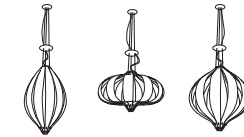
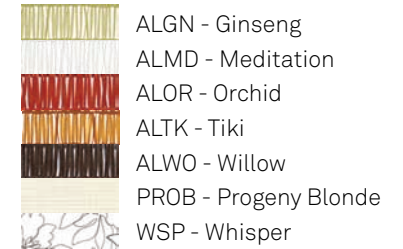
BLOOM LED

14W 800 lumen Osram Sylvania directional LED
Osram Optotronic® universal voltage power supply

Bloom can be set in various positions
Diameter range Ø 22.5" to Ø 39.5"
Height range 39.5" to 26"
Canopy Ø 5.5", reflector Ø 9", overall drop to 8"

Shade sections are 1/16" Imago from Knoll Textiles
Shade spiders are diecast aluminum (brite finish)
Reflector and canopy are chrome silver powder coat

Shade material choices:



ALLURE GINSENG

DETAIL - ALLURE MEDITATION

DIMENSION DIAGRAM

RESOLUTE

RESOLUTE is a registered trademark of MANIFESTO Corporation
4660 Ohio Avenue South, Unit C, Seattle WA 98134
www.resoluteonline.com info@resoluteusa.com

