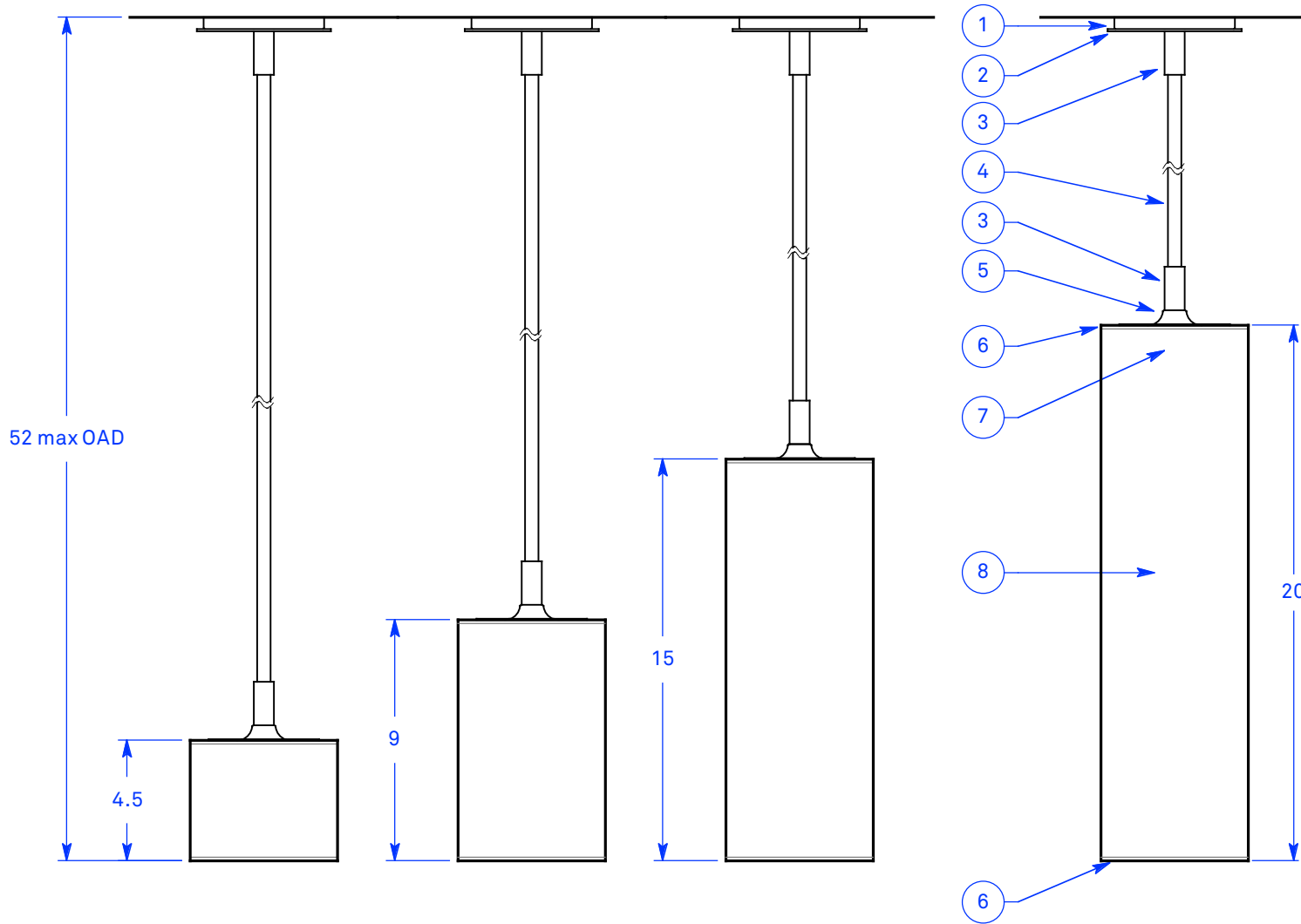


ALL DIMENSIONS IN INCHES



**NOTES:**

1. Ø 4.5" powder coated steel canopy
2. Ø 5" powder coated faceplate
3. Powder coated coupler for field cut stem
4. Ø 0.5" powder coated stem (field cut to length)
5. Powder coated shade mounting hub for magnetically attached shade
6. Satin clear high-impact copolymer top and bottom diffusion disks
7. 955 lumen 2700K 80 CRI LED module (90 CRI available upon request)
8. Carnegie Xorel fabric backed with opal white high-impact copolymer

Type: Quantity:

Approval signature:

Name:

Firm:

Date:

**Puncheon 5.5**  
**Rigid Drop**  
 10 Watt LED  
 TRIAC/ELV 10% Dimming  
 Universal voltage

**Configurations:**

- P55RS - Ø 5.5-4.5
- P59RS - Ø 5.5-9
- P515RS - Ø 5.5-15
- P520RS - Ø 5.5-20

**Finish options:**

- Silver
- Bronze

**Xorel fabric selection:**

1.19.18

**RESOLUTE**

4617 Colorado Ave. S, Unit A  
 Seattle, WA 98134  
 T 206.343.9323  
 F 888.346.8079  
 info@resoluteusa.com

