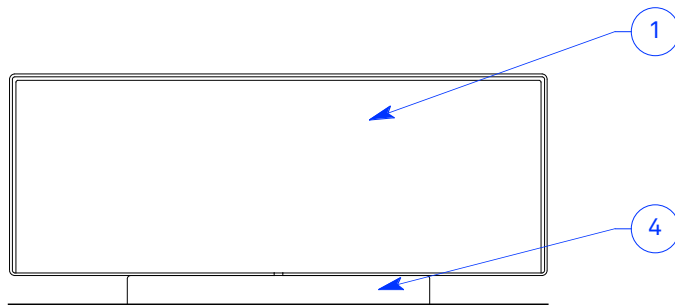
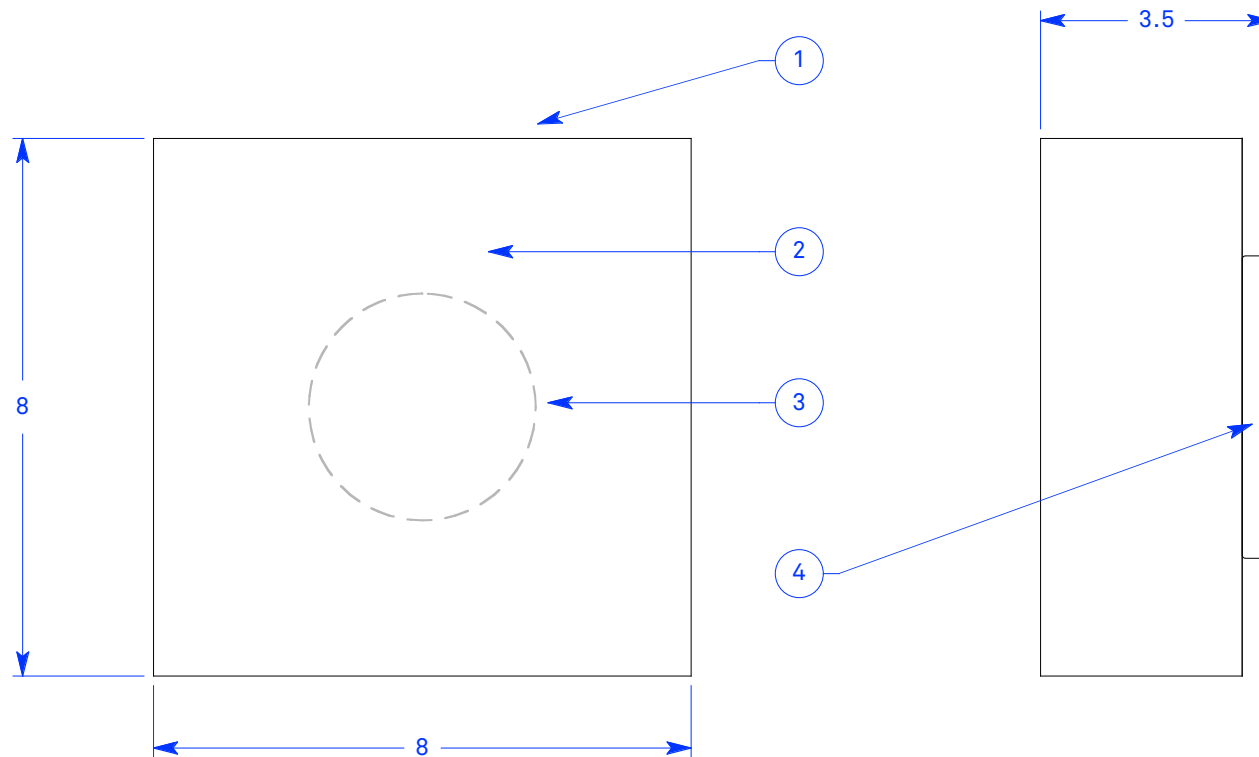


ALL DIMENSIONS IN INCHES



NOTES:

- 1. Frosted translucent high-impact copolymer end caps both ends
- 2. Carnegie Xorel fabric backed with high-impact copolymer sheet
- 3. 955 lumen 2700K 80 CRI LED module
- 4. Ø 4.5" black powder coated canopy

Type:

Quantity:

Approval signature:

Name:

Firm:

Date:

Ballard 88 ADA
Model SN02
10 Watt LED
TRIAC/ELV 10% Dimming
Universal voltage

Xorel fabric selection:

9.26.2018

RESOLUTE

4617 Colorado Ave. S, Unit A
Seattle, WA 98134
T 206.343.9323
F 888.346.8079
info@resoluteusa.com

