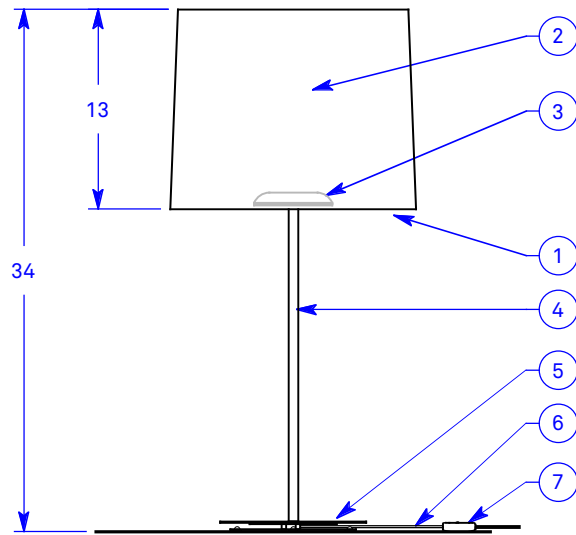
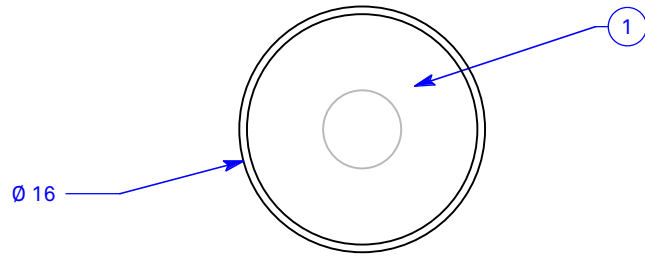


ALL DIMENSIONS IN INCHES



**NOTES:**

1. Satin clear high-impact copolymer top and bottom diffusion disk
2. Fully enclosed Carnegie Xorel fabric shade backed with opal white high-impact copolymer sheet
3. 3000K 90+ CRI LED module, 1361 source lumens
4. Ø 0.625" powder coated stem
5. Ø 9.5" powder coated faceplate
6. Clear jacket electrical cord and plug
7. ON/OFF switch

Type:	Quantity:
Approval Signature:	
Specifier:	
Date:	
<b>Prosperity 16 Table</b> Model NPN16ST 15 Watt LED TRIAC/ELV 10% Dimming 120V	
<b>Dimming option:</b> <input type="checkbox"/> Casambi wireless	
<b>Hardware finish:</b> <input type="checkbox"/> Matte silver <input type="checkbox"/> Bronze	
<b>Xorel fabric selection:</b> <input type="text"/>	
Date: 3.7.22	
<b>RESOLUTE</b> 4617 Colorado Ave. S, Unit A Seattle, WA 98134 T 206.343.9323 info@resoluteusa.com	

