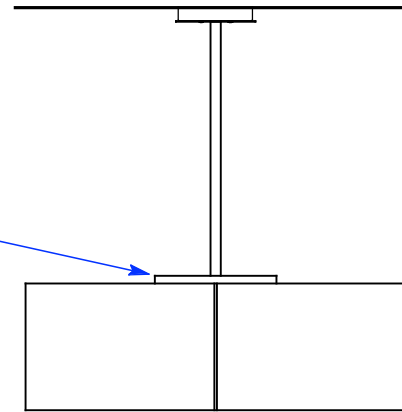
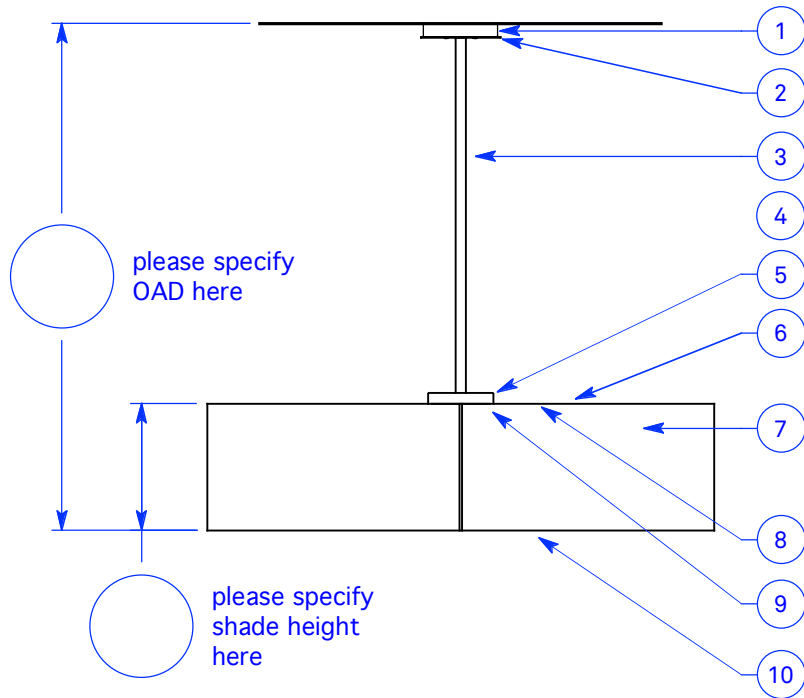
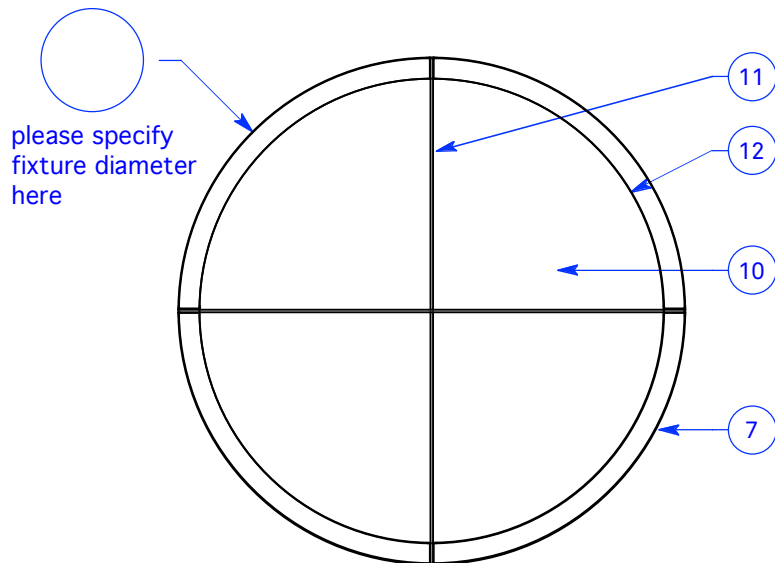


ALL DIMENSIONS IN INCHES



UPLIGHT CONFIGURATION



NOTES:

1. Ø 7" x 1.25" deep powder coated canopy
2. Ø 7.5" powder coated faceplate
3. Ø 1" powder coated stem
4. Optional lensed uplight contains 2x 3000K 90+ CRI LED modules 2596 source lumens total; dimming LED driver @ 19.5W
5. Powder coated wiring enclosure if no up-light module
6. White array bed
7. Carnegie Xorel fabric outer shade backed with high-impact copolymer sheet
8. 8x 3000K 90+ CRI LED modules, total source lumens:
shade Ø 32/36": 10386lm
shade Ø 42/48/60": 11208lm
9. 2x dimming LED drivers @ 85W inside enclosure
10. Opal white fabric bottom diffusion disk
11. 1/4" thick powder coated aluminum armature
12. Frosted high-impact copolymer inner shade

Type:	Quantity:
Approval Signature:	
Specifier:	
Date:	
<p>Savoie Rigid Drop 78 Watt LED, 1% Dimming</p>	
<p>Dimming options:</p> <p><input type="checkbox"/> 0-10V Universal voltage</p> <p><input type="checkbox"/> Lutron EcoSystem Universal voltage</p> <p><input type="checkbox"/> Lutron 2-Wire phase control 120V</p>	
<p>Fixture options:</p> <p><input type="checkbox"/> Remote control - via Lutron PowPak</p> <p><input type="checkbox"/> Sensor - Integrated motion & daylight combination sensor</p>	
<p>Hardware finish:</p> <p><input type="checkbox"/> Matte silver</p> <p><input type="checkbox"/> Bronze</p>	
<p>Xorel fabric selection:</p> <div style="border: 1px solid black; height: 20px; width: 100%;"></div>	
Date: 10.1.21	
<p>RESOLUTE</p> <p>4617 Colorado Ave. S, Unit A Seattle, WA 98134 T 206.343.9323 info@resoluteusa.com</p>	

