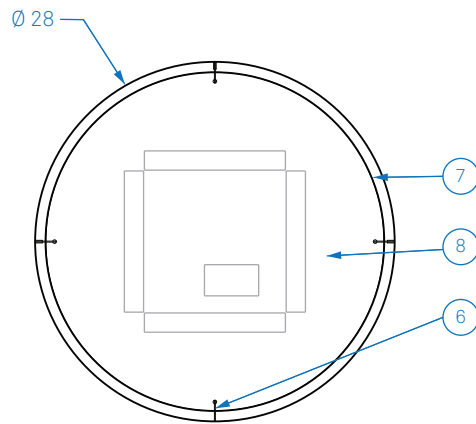
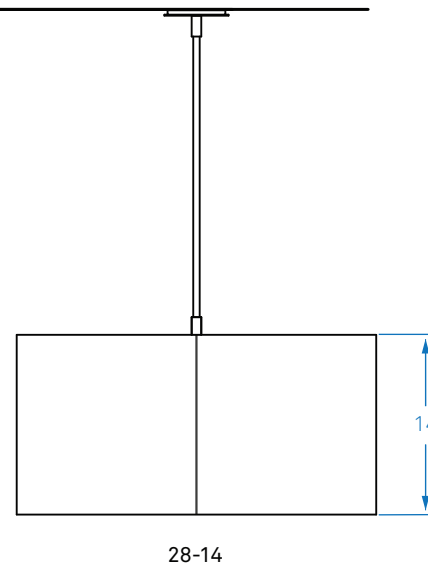
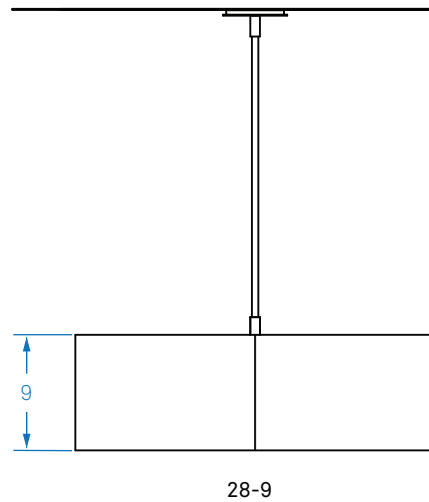
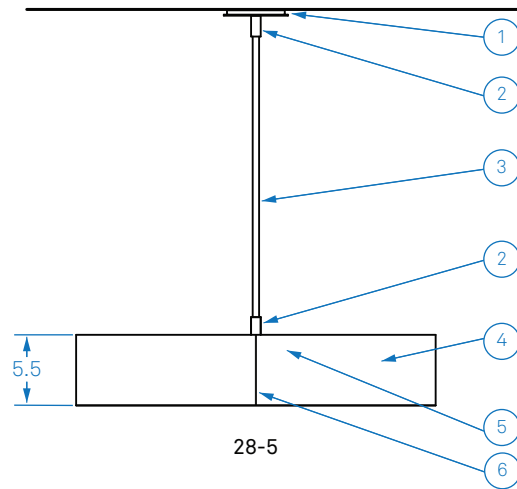


ALL DIMENSIONS IN INCHES



NOTES:

1. Powder coated Ø 4.5" canopy and Ø 5" faceplate
2. Aluminum coupler, finish to match faceplate
3. Ø .5" aluminum stem (field cut to length), finish to match faceplate:
28-5 OAD 9.5" min, 54.5" max
28-9 OAD 13.5" min, 58.5" max
28-14 OAD 18.5" min, 63.5" max
4. Carnegie Xorel fabric backed with high-impact copolymer sheet
5. 4x 3000K 90+ CRI LED downlight modules, 5604 total source lumens, other color temperatures available upon request
6. Powder coated spline, finish to match faceplate
7. Frosted high-impact copolymer inner diffuser
8. Opal white high-impact copolymer bottom diffusion disk

Type:	Quantity:
Approval Signature:	
Specifier:	
Date:	
<p>Smith 28 Rigid Drop Model S28450, S2845L, S28490, S2849L, S284140, S28414L</p> <p>40 Watt LED, 1% Dimming</p>	
<p>Shade configurations:</p> <p><input type="checkbox"/> 28-5 <input type="checkbox"/> 28-9 <input type="checkbox"/> 28-14</p> <p>Driver configurations:</p> <p><input type="checkbox"/> 0-10V dimming, universal voltage <input type="checkbox"/> Lutron EcoSystem dimming, universal voltage <input type="checkbox"/> Lutron 2-Wire phase control dimming, 120 volts</p>	
<p>Hardware finish:</p> <p><input type="checkbox"/> Matte silver <input type="checkbox"/> Bronze</p>	
<p>Xorel fabric selection:</p> <div style="border: 1px solid black; height: 20px; width: 100%;"></div>	
7.23.21	
<p>RESOLUTE</p> <p>4617 Colorado Ave. S, Unit A Seattle, WA 98134 T 206.343.9323 info@resoluteusa.com</p>	

